

# Serotypes of invasive *Streptococcus pneumoniae* in Serbia

During the period from July 2009. to February 2014., 177 invasive *S. pneumoniae* strains were sent from microbiological laboratories overall Serbia into the RL for Streptococci (Fig. 1).

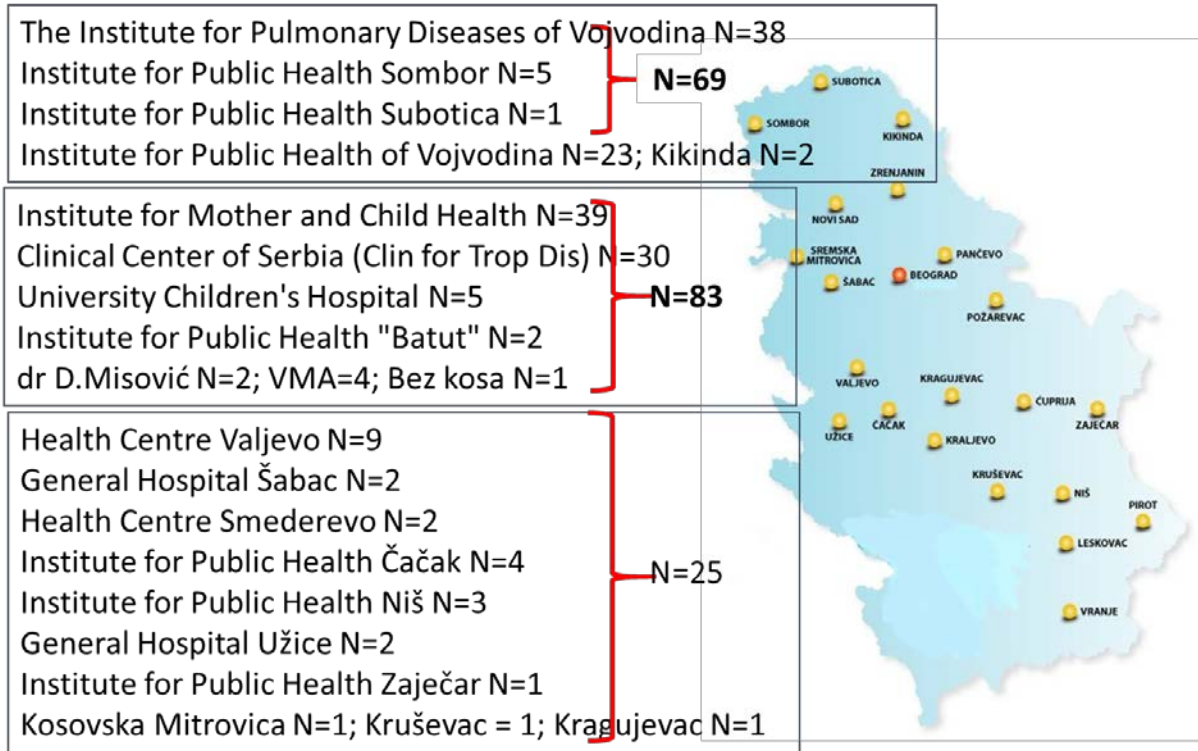
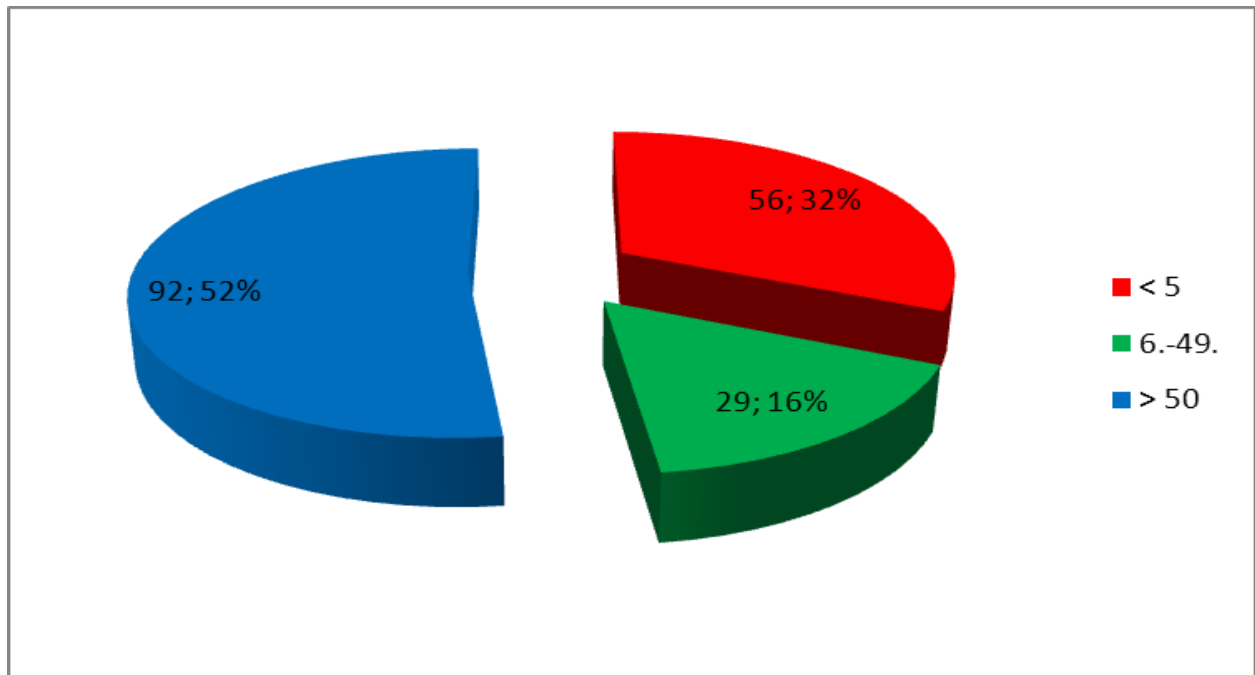


Figure 1. Microbiological laboratories that sent strains

52% strains were isolated from the patients older than 50 ys and 32% from children younger than 5 ys (Figure 2)



*Figure 2.* Distribution of pneumococcal isolates by age groups

Strains were isolated from:

- Cerebrospinal fluid (63)
- Blood (90)
- Pleural aspirates (24)

Serotyping was performed by quelling reaction using Statens Serum Institute, Denmark, antisera.

Overall, 27 different serotypes were detected among all age groups (Fig 2). Type 3 dominated, followed by 19F and 14.

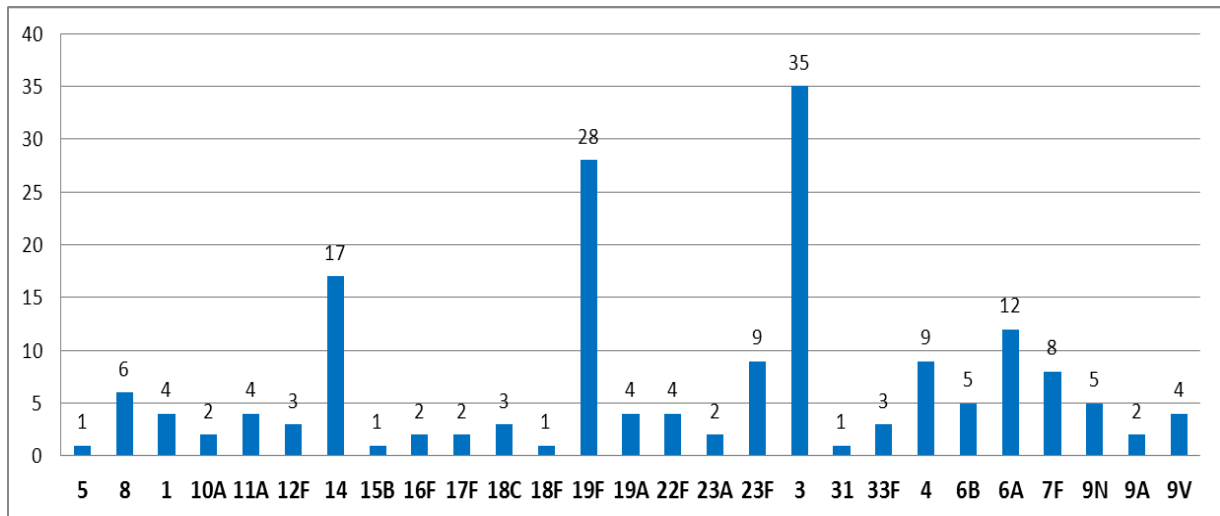


Figure 3. Serotype distribution among 177 invasive pneumococcal strains

In children  $\leq 5$  ys, 17 different serotypes were found - 19F and 14 dominated (Fig 4).

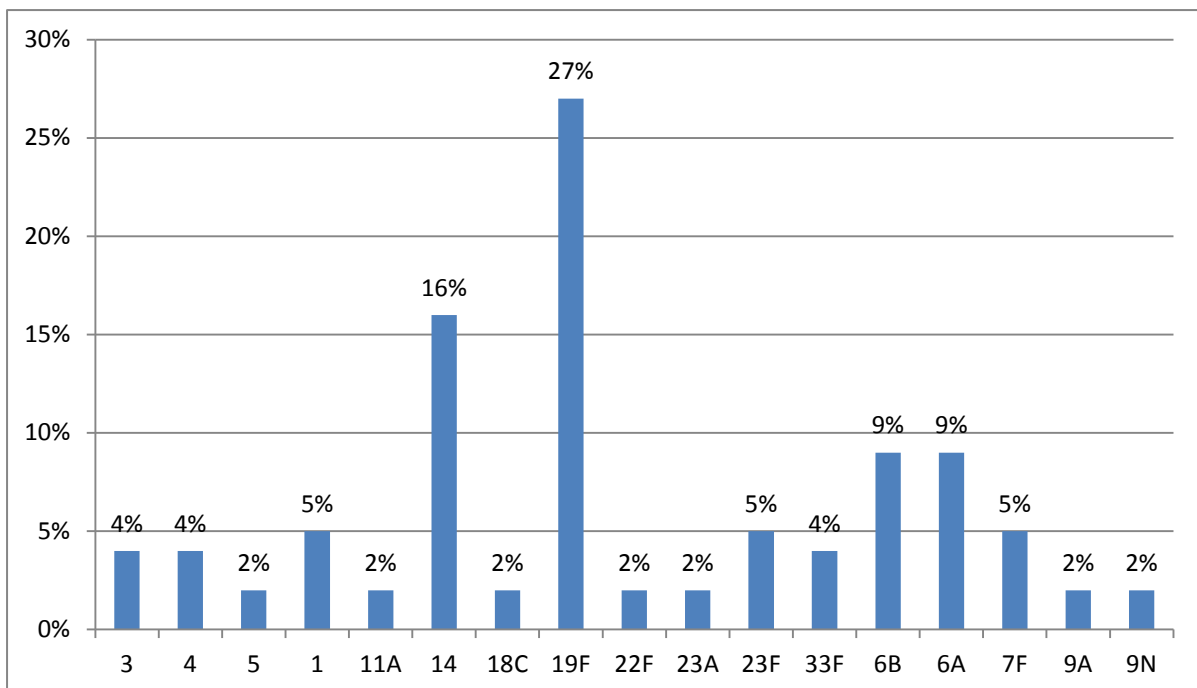
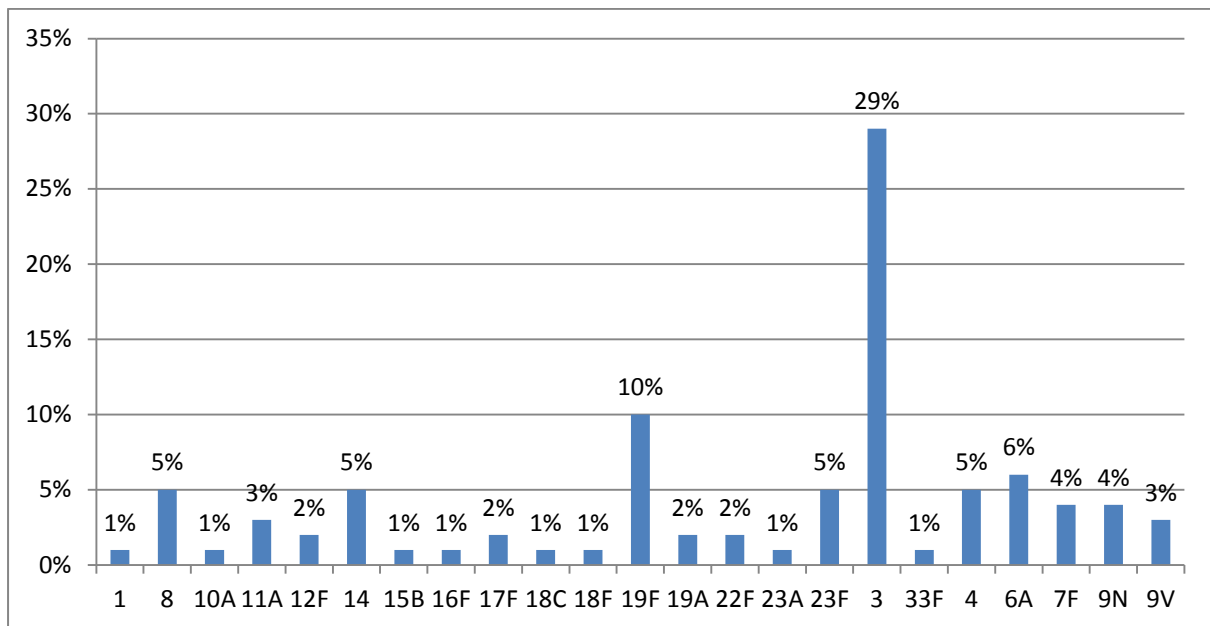


Figure 4. Serotype distribution in children  $\leq 5$  ys (in percentage)

In adults  $\geq 50$  ys, 23 different pneumococcal serotypes were found. Type **3** dominated, followed by **19F** (Fig 5).



**Figure 5.** Serotype distribution in adults  $\geq 50$  ys (in percentage)